



## WIFI Module Instruction Manual

One WIFI Communication Module connect to one light Commercial.

### 1、ARV WIFI Module Configuration

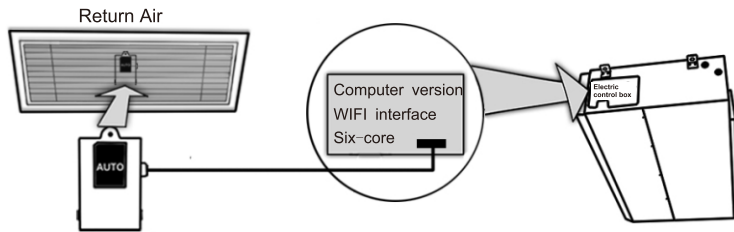
#### 1.1 APP Download

Mobile terminal scan the following dimensional code to download APP, or search “AC Freedom” in APPSTORE and Google store.



#### 1.2 Light Commercial WIFI Module Installation

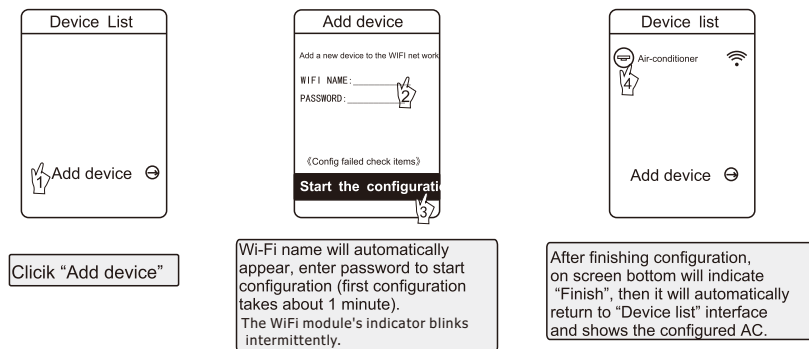
a) Connect the WIFI module communication wire to WIFI interfaces of main PCB, as shown below:



b) The WIFI module should be placed in the return air or some other place in WIFI area. (customers buy the wireless router)

#### 1.3 APP Configuration

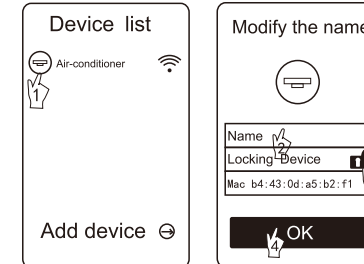
- Press "healthy" button 8 times consecutively by remote controller, and buzzer even ring two sound then into the configuration; or press S1 button of wifi module board for 5s to enter configuration mode, the WiFi module's light (D1) will begin to flash quickly at the same time.
- Connect mobile terminals to WIFI, open APP “AC Freedom”, and then operate following the steps below:



**Note:** If the configuration fails or you change the password of wireless router, you need to reset the WIFI module to reconnect: Turn on the power of the module, then repeat the steps above for APP configuration.

### 2.AC Management

#### 2.1 Modify AC name and locking function



**Note:**

If you had locked AC equipment, you need to unlock before connecting other mobile terminal. If the mobile terminal locked AC was accidentally lost, you need to reset WIFI module first, and then use the new mobile terminal to connect (Reset step is same with 1.3 APP configuration).

**2.2 For other instructions, please refer to "HELP" in APP.**

#### 2.3 Remote-control device

Connect the wireless router to internet, then open the GPRS. It means the remote control device, voice control function only effective after connected to the Internet.

### 3.Troubleshooting

**If unable to properly configured or connect the WIFI box:**

- Make sure the WIFI box for wiring is properly connected.
  - Long press WIFI box 8 seconds to reconfigure the positive button.
- If the problem can't be solved, please contact after sales person.

### 4. Technical Parameters

- Working temperature: 0~50°C;
- Working environment humidity: 20~90%RH ;
- Dimensions: 78 X 52 X 15.5
- Configuration cable wire length: 1500mm

